

Datalogic S.r.l.

Via San Vitalino 13
40012 Calderara di Reno (BO)
Italy
Tel. +39 051 3147011
Fax +39 051 3147205

©2019 Datalogic S.p.A. and/or its affiliates

♦ All rights reserved. ♦ Without limiting the rights under copyright, no part of this documentation may be reproduced, stored in or introduced into a retrieval system, or transmitted in any form or by any means, or for any purpose, without the express written permission of Datalogic S.p.A. and/or its affiliates. Owners of Datalogic products are hereby granted a non-exclusive, revocable license to reproduce and transmit this documentation for the purchaser's own internal business purposes. Purchaser shall not remove or alter any proprietary notices, including copyright notices, contained in this documentation and shall ensure that all notices appear on any reproductions of the documentation. Should future revisions of this manual be published, you can acquire printed versions by contacting your Datalogic representative. Electronic versions may either be downloadable from the Datalogic website (www.datalogic.com) or provided on appropriate media. If you visit our website and would like to make comments or suggestions about this or other Datalogic publications, please let us know via the "Contact Datalogic" page.

Disclaimer

Datalogic has taken reasonable measures to provide information in this manual that is complete and accurate, however, Datalogic reserves the right to change any specification at any time without prior notice. Datalogic and the Datalogic logo are registered trademarks of Datalogic S.p.A. in many countries, including the U.S.A. and the E.U. Rhino is a trademark of Datalogic S.p.A. and/or its affiliates. Google, Google Play and other marks are trademarks of Google LLC. All other brand and product names may be trademarks of their respective owners.

Patents

See www.patents.datalogic.com for patent list.

Reference Documentation

For further information regarding Rhino II refer to the SDK Help on-line and to the Rhino II User's Manual, downloadable from our website www.datalogic.com.

Support Through the Website

Datalogic provides several services as well as technical support through its website. Log on to www.datalogic.com and click on the **SUPPORT** link which gives you access to:

Downloads by selecting your product model from the dropdown list in the Search by Product field for specific Data Sheets, Manuals, Software & Utilities, and Drawings;

Repair Program for On-Line Return Material Authorizations (RMAs) plus Repair Center contact information;

Customer Service containing details about Maintenance Agreements;

Technical Support through email or phone.

Warranty Terms and Conditions

The warranty period is 1 year for the device and 90 days for consumables (e.g. battery, power supply, cable etc.) from date of purchase at our company.



Rhino™ II

Rugged Vehicle Mount Computer



Quick Start Guide



822003341 (Rev. A) Feb. 2019



See the Safety & Regulatory Addendum included with your product for additional regulatory, safety and legal information.

©2019 Datalogic S.p.A. and/or its affiliates. All rights reserved. Datalogic and the Datalogic logo are registered trademarks of Datalogic S.p.A. in many countries, including the U.S. and the E.U.



www.datalogic.com

Introduction

The Rhino II vehicle mount computers, available in both 10" and 12" display sizes, set the standard for ruggedness in the warehouse. A sealed design tested to IP65/IP67 ensures operation in the toughest environments. The capacitive touch models feature 3 mm anti-glare armored glass, while still allowing use of gloves.

Tailored for warehouse management, the Rhino vehicle computer increases productivity through reduced errors during receiving, putaway, picking and shipping activities. Adding a handheld bar code scanner such as Datalogic's PowerScan™ allows for quick data entry and location confirmations.

The Rhino vehicle computer is equipped with an internal isolated power supply 12-48VDC, ignition sense to automatically control the power, and an optional battery backup for the ultimate protection against data loss. The Rhino vehicle computer fits different mounting and space constraints. Mounting options include various brackets and RAM mounts for the vehicle computer along with ABCD or QWERTY external keyboards.

Out of the Box

The Rhino II package contains:

- Rhino II vehicle mount computer.
- Power cable (2.9m ≈ 9.5').
- Bag: 4 mounting screws and washers for use with RAM mounts.
- Bag: rubber cable slot seals and cable ties.
- Quick Start Guide
- Safety & Regulatory Addendum.

Remove all the components from their packaging; check their integrity and compare them with all the packing documents.



Keep the original packaging for use when sending products to the technical assistance center. Damage caused by improper packaging is not covered under the warranty.

General View

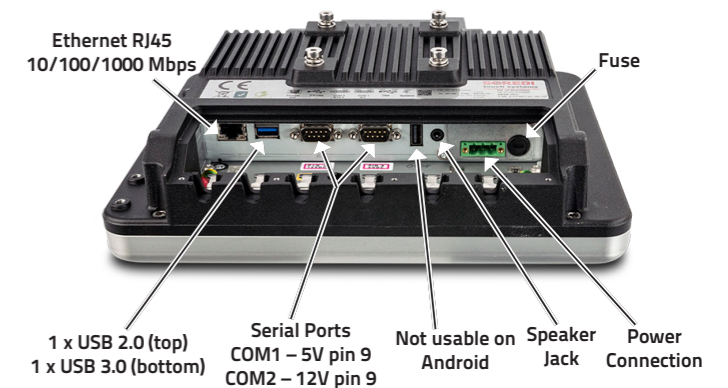
Front



Back



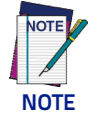
Bottom



Getting Started

Power On

Connect a power source to the Rhino II and press and hold the power button for a few seconds to start the device.



The Rhino II has 3 different startup mode settings. Power on may require the presence of the ignition signal.

To shutdown the device, press and hold the power button for a few seconds. The device will power off according to its current shutdown mode.

Main Window

As soon as the mobile computer is on, the Android desktop appears on the screen. Wait for a few seconds before starting any activity, so that the Rhino II completes its startup procedure.



Adjust the Screen Brightness

To adjust the screen brightness:

- Press the + button to increase the brightness.
- Press the - button to decrease the brightness.

Adjust the Volume

To adjust the volume, press the FN button first.

- Press the + button to increase the volume. The device will play the Default Sound at the new volume setting.
- Press the - button to decrease the volume. The device will play the Default Sound at the new volume setting.

Front Panel Keys

The keys **FN**, **1/3**, **2/4** and **KEY**, on the right side of the device, are programmable. The programming is set by command lines in the "\Utilities\UtilConfig.cfg" file.

1/3 and **2/4** are programmable as two keys each, giving a total of four available keys. When directly pressed, **1/3** and **2/4** keys enable respectively functions **1** and **2**.

After a **FN** key press, the device is set into function mode, the blue function LED lights up and **1/3** and **2/4** keys enable respectively functions **3** and **4**.

To turn off function mode, press **1**, **2** or **FN**.

By default, the keys have the following functions:

- **Power** – Starts and shutdowns the terminal according to the current Startup/Shutdown mode.
- **1** – Up arrow
- **2** – Down arrow
- **3** – Back
- **4** – Return
- **KEY** – Home

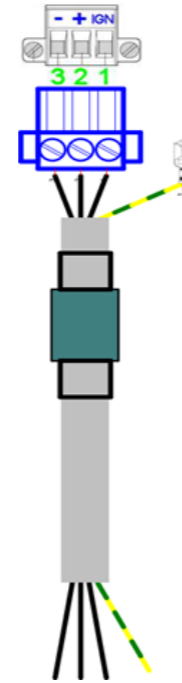


Power Connection

The internal power supply 12-48VDC is electrically isolated. The wires are already connected to the provided cable. The wires of the 3-pole input connector must be connected to DC Plus, DC minus and ignition.

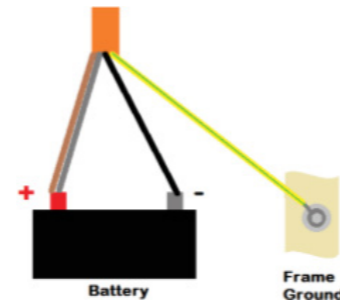


The ground wire (yellow - green) inside the cable must be connected to the ground contact.

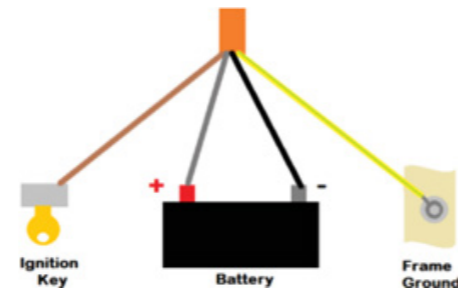


- | | | |
|--------|-----------------|---------------|
| 1. IGN | Ignition | Grey |
| 2. + | Positive charge | Brown |
| 3. - | Negative charge | Black |
| 4. GND | Mass | Yellow/ Green |

Autostart:

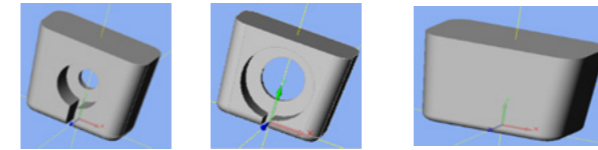
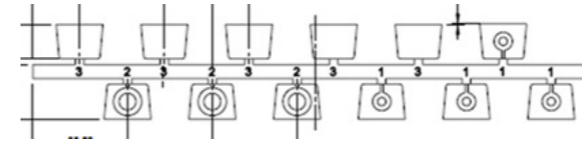


Start with the ignition key:



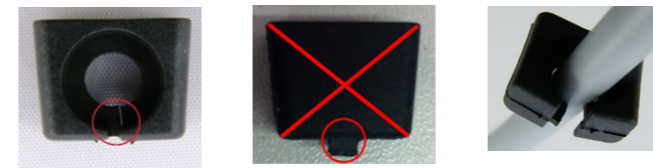
Fasten the Cables

There are three different types of gaskets. Choose the right one according to the size of the cable.



- | | | |
|---------------------------|-----------------------------|---------------------|
| Type 1:
e.g. USB cable | Type 2:
e.g. power cable | Type 3:
no cable |
|---------------------------|-----------------------------|---------------------|

Type 1 and Type 2: cut the cable at its thinnest point (see the left picture below). After the rubber gasket is cut off, nothing must protrude from it (see the middle picture below). Slide the sealing rubber over the cable (see the right picture below).



Place the sealing rubber into the appropriate cut-out (wide side up). The upper edge must be flush with the housing. Fix the cable to the corresponding tab with the cable tie, and then cut off the protruding cable tie. Seal unused cable glands with rubber seal type 3.



The cable cover is mounted in 3 steps:

1. Place the cable cover at an angle and slide it into the groove provided.



2. Push the cable cover downwards (ensure it doesn't slip out of the groove).



3. Fix with the screws provided.

